

KeyConnect

Wireless Internet hotspot service

KeyConnect wireless hotspot service

Get out more

Take the internet with you and transform the way you use it. With wireless hotspots at over 10,000 bars, cafés and public locations across the UK, you'll be sure to find a comfortable place to take your surfing.

Any hotspot run by The Cloud can be used with KeyConnect and these are commonly found in bars, restaurants, cafés, train stations and airport terminals.



Advantages of KeyConnect

- Access your mail away from home;
- Stay connected through instant messengers and social networking sites while out;
- Take your work to a more social atmosphere;
- Keep an eye on your auctions while enjoying a pint.

How to find a hotspot

- **Check before you leave**
The Cloud's website (<http://www.thecloud.co.uk/>) has a database of hotspots that can be searched by postcode or town name. This way you can pick your location before you even set off.
- **Find one on the go**
If you're already out and about and need a hotspot, just text cloud to 82085 to be sent the location of your nearest hotspot by text message (you will be charged £1). If you want a map and three more locations, just text again and you'll be sent another message free of charge.



a **keycom** product

KeyConnect

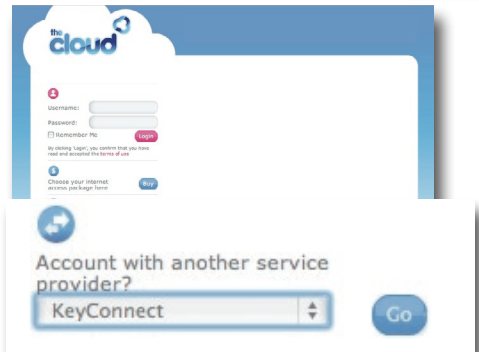
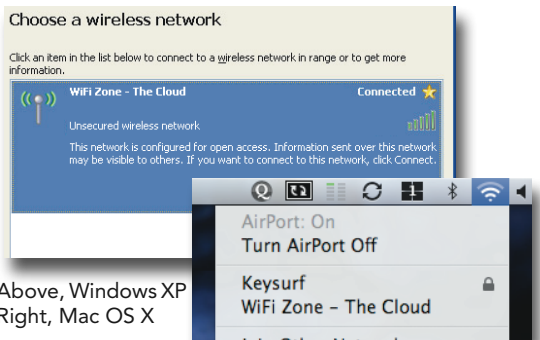
Wireless Internet hotspot service

You will need:

- A computer fitted with a wireless adapter. The adapter needs to support the wi-fi 802.11b/g standard;
- A recent operating system (Windows 2000 or newer, Mac OS X, or Linux 2.6 or higher);
- To be in range of a hotspot run by The Cloud.

Do this:

1. Start your computer;
2. Install your wireless adapter (if necessary);
3. Connect to the wireless network called "WiFi Zone - The Cloud";
4. Open your web browser and scroll to the 'partner accounts' area. Select KeyConnect from the list and then click 'Go';
5. You will be redirected to the KeyConnect sign in page. Fill out the form with your username and password, then select your provider from the list;
6. Click the 'Sign In' button and you will be redirected to The Cloud's portal page and your session will be logged in. Another browser window will open showing you how long you've been connected for and provide a 'logout' button;
7. When you have finished your session, click the 'logout' button or disconnect from the wireless network (you will automatically be signed out after ten minutes of inactivity).



a **keycom** product